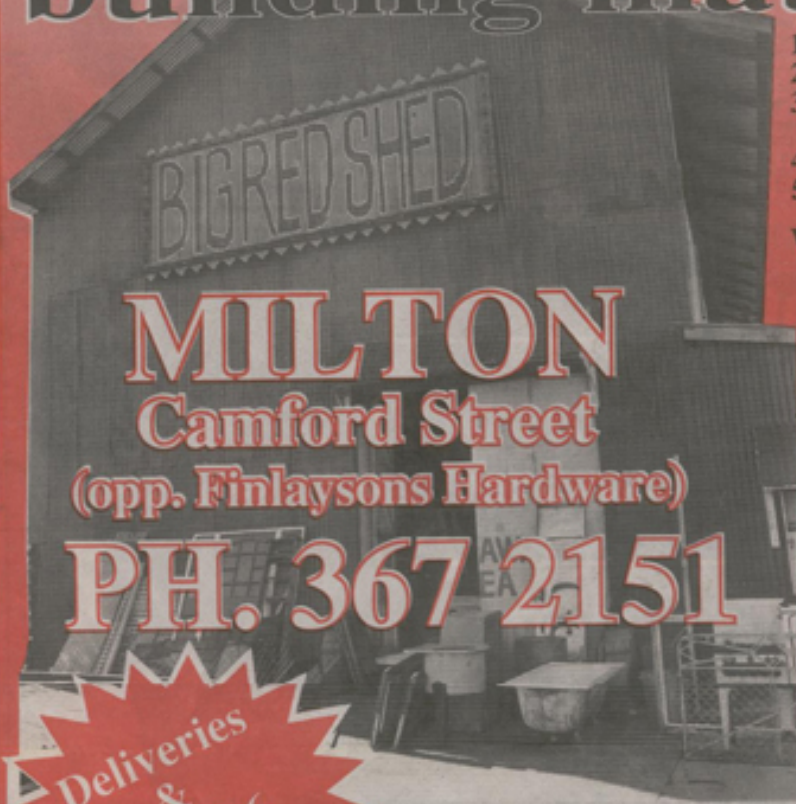


Why buy recycled building materials



1. Cheaper
2. Often better quality
3. Warmth and character of original materials
4. Environmentally friendly
5. It's fun to hunt down a bargain

WE CURRENTLY HAVE A GOOD STOCK OF:

- * Matching French Doors and Windows
- * Entrance Doors
- * VJ and Flooring
- * Claw Baths and Pedestal Basins
- * Fixtures and Fittings
- * Ply Sheets and Timber

In fact we salvage at least one old home per week, so pop in and say hello to our helpful staff at

THE BIG RED SHED
BUY • SELL • TRADE

MILTON
Camford Street
(opp. Finlaysons Hardware)

PH. 367 2151

Deliveries & OPEN 6 DAYS

THE BIG RED SHED Recycled Timber Yard

"THE BIG RED SHED" at Darra is reclaiming Queensland's unique architectural heritage. Our Darra yard offers three acres of timber of rare quality. We specialise in salvage from factories, industrial sites, bridges, wharves and larger colonials, and can supply original timbers suitable for building or renovating your home.

We have the facility to mill extra wide flooring. Phone Roy for stock enquiries.

DARRA — PH. 279 0911
18 Sumners Road (next to Centenary Landscapes)